

# TUNNEL 50 TWIN INOX

VERSION OF TUNNEL 50 TWIN IN STAINLESS STEEL - IDEAL FOR PHARMACEUTICAL AND FOOD SECTOR



## DESCRIPTION

**TUNNEL 50 TWIN INOX** is designed to give effective answers to those who need to pack small products at high speeds, obtaining a safe and aesthetically optimal packaging. This **shrink wrap tunnel** boasts many features that contribute to this objective: the double heating chamber with

**minipack@-torre S.p.A.**

Sede legale - Via Provinciale, 54 - 24044 DALMINE (BG) Italy

P.IVA - C.F.: 01633550163 - Capitale sociale 619.200,00 i.v. - Reg. Imprese di Bergamo 01633550163 - REA n. 224151

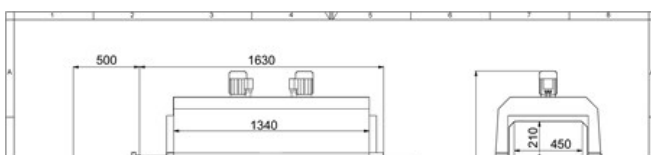
separate regulation, an exceptional capacity of thermal insulation, the high speed of passage and retraction are all the qualities that make TUNNEL 50 TWIN INOX a perfect packaging machine to meet every need of packaging with extreme efficacy. The version entirely made of stainless steel is ideal for the needs of the food and pharmaceutical sector.

## TECHNICAL FEATURES

|                            |   |
|----------------------------|---|
| Electrical power supply    | 200V 50/60Hz 3Ph<br>208V 60Hz 3Ph<br>400V 50/60Hz 3Ph   |
| MAX power installed        | 14 kW (200V)<br>15 kW (208V)<br>14,5 kW (400V)  |
| Maximum current            | 38 A (200V)<br>43 A (208V)<br>21 A (400V)   |
| MAX product size           | 400x190 mm xL.<br>(The maximum length depends on the shape, conveyor belt speed and type of film, etc.) |
| Machine dimensions         | 2130x800x1460 mm  |
| Machine weight (net/gross) | 260/318 kg  |
| Tunnel inlet dimensions    | 450x210 mm  |

minipack®-torre shall not be held liable for typos or printing errors in this catalogue. It also reserves the right to make changes to the specified features without prior notice. All trademarks are property of their respective owners and are hereby acknowledged.

## TECHNICAL DRAWING



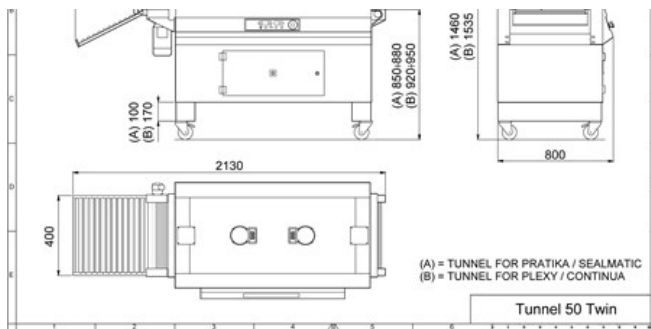
**minipack®-torre S.p.A.**

Sede legale - Via Provinciale, 54 - 24044 DALMINE (BG) Italy

P.IVA - C.F.: 01633550163 - Capitale sociale 619.200,00 i.v. - Reg. Imprese di Bergamo 01633550163 - REA n. 224151



**minipack®**  
THE ORIGINAL PIONEER



## FEATURES

- Manual regulation of conveyor height
- Digital display with 9 storable programs
- Selection of self rotation of conveyors rolls
- Double air flap
- Auto switch-off
- Exit roll conveyor
- Two independent heating rooms.

**minipack®-torre S.p.A.**

Sede legale - Via Provinciale, 54 - 24044 DALMINE (BG) Italy

P.IVA - C.F.: 01633550163 - Capitale sociale 619.200,00 i.v. - Reg. Imprese di Bergamo 01633550163 - REA n. 224151